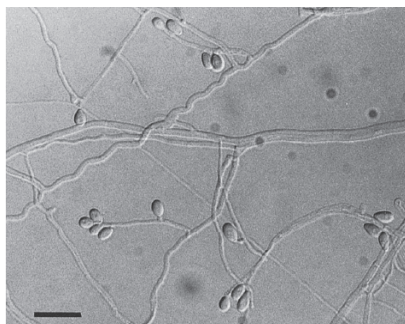


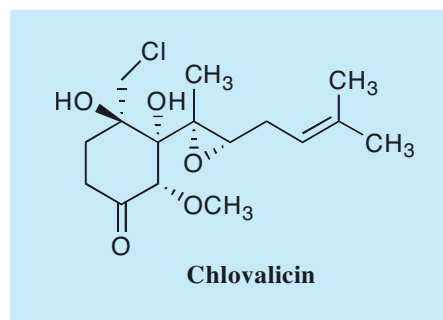
# Chlovalicin

## 1. Discovery, producing organism and structure<sup>1,2)</sup>

Chlovalicin was found in the course of a search for suppressors of IL-6 activity in the culture broth of the fungal strain *Sporothrix* sp. FO-4649<sup>1,2)</sup>. The absolute configuration of chlovalicin was clarified by chemical transformation from ovalicin.<sup>2)</sup>



*Sporothrix* sp. FO-4649  
Bar: 20  $\mu$ m



## 2. Physical data

Colorless oil. C<sub>16</sub>H<sub>25</sub>O<sub>5</sub>Cl; mol wt 332.14. Sol. in EtOAc, CHCl<sub>3</sub>.

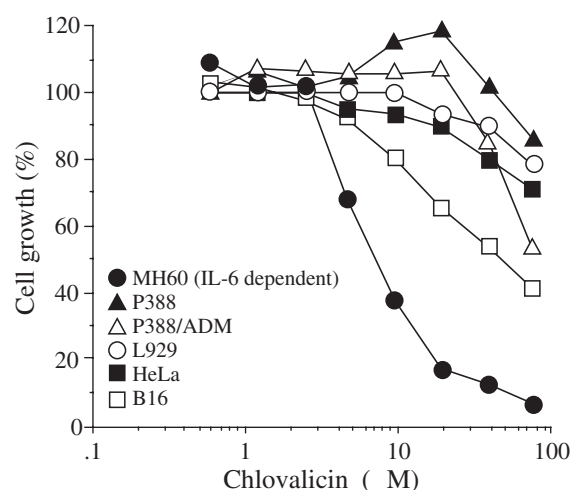
## 3. Biological activity<sup>1)</sup>

### 1) Inhibition of cell growth<sup>1)</sup>

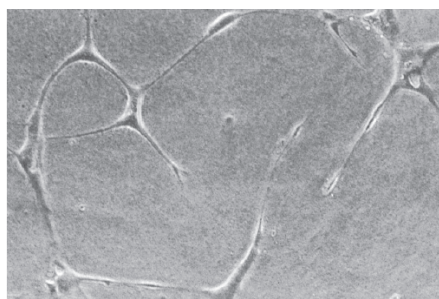
Chlovalicin showed selective inhibitory activity against IL-6 dependent MH60 cells with an IC<sub>50</sub> value of 6.4  $\mu$ M.

### 2) Anti-angiogenic activity

Chlovalicin inhibited the tube formation of calf pulmonary arterial endothelial cells (CPAE) with an IC<sub>50</sub> value of 1.2  $\mu$ M.



control



5  $\mu$ M



## 4. References

- [619] M. Hayashi *et al.*, *J. Antibiot.* **49**, 631-634 (1996)
- [620] S. Takamatsu *et al.*, *J. Antibiot.* **49**, 635-638 (1996)